



GAT MONTHLY MEMBERSHIP PROGRESS REPORT

Results as of: 4/30/2022

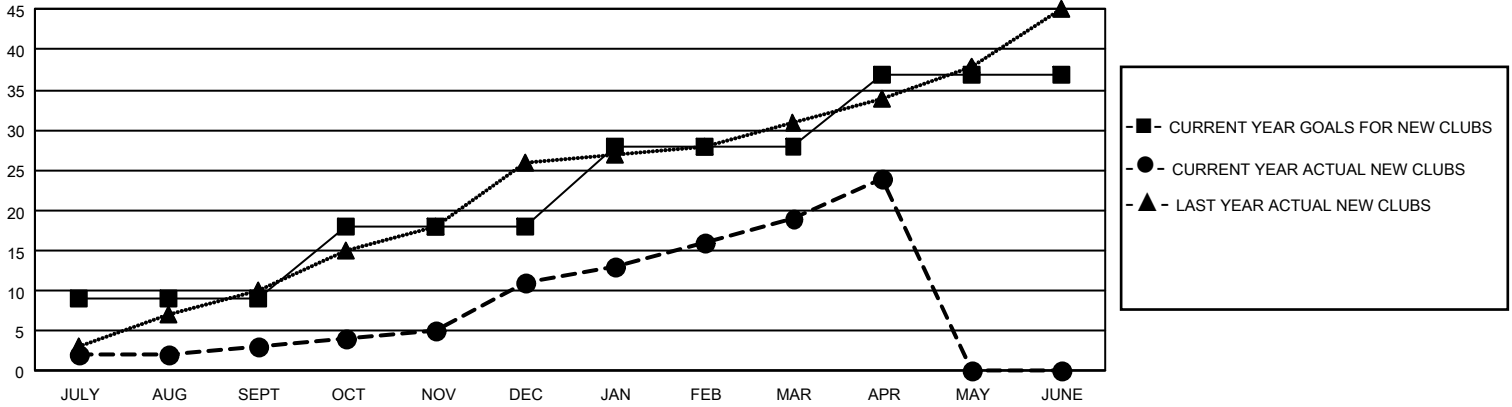
GMT Constitutional Area 3, Group A

REPORT DOES NOT INCLUDE CLUBS IN UNDISTRICTED AREAS.

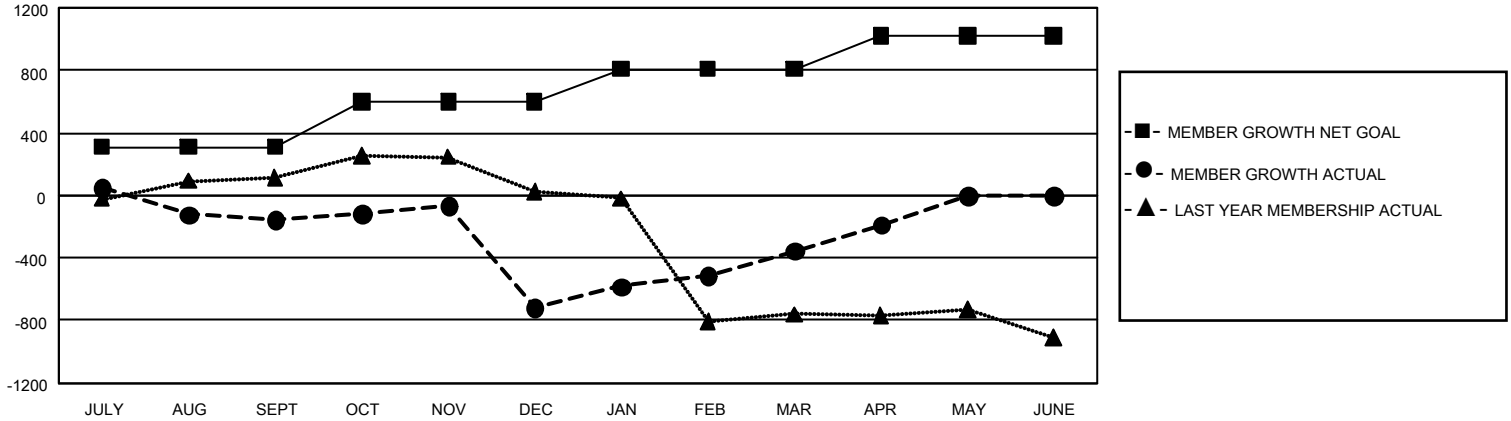
| Clubs | | | |
|-----------------------|---------------|-----------|---------------|
| RESULTS FOR 2021-2022 | | | |
| QUARTER | NEW CLUB GOAL | NEW CLUBS | DROPPED CLUBS |
| JULY/AUG/SEPT | 27 | 3 | 24 |
| OCT/NOV/DEC | 27 | 8 | 31 |
| JAN/FEB/MAR | 30 | 8 | 1 |
| APR/MAY/JUNE | 27 | 5 | 1 |

| Members | | | |
|-----------------------|------------------------|----------------------|--|
| RESULTS FOR 2021-2022 | | | |
| QUARTER | MEMBER GROWTH NET GOAL | MEMBER GROWTH ACTUAL | DROPPED MEMBERS ACTUAL (including transfers) |
| JULY/AUG/SEPT | 310 | 499 | 572 |
| OCT/NOV/DEC | 291 | 459 | 984 |
| JAN/FEB/MAR | 206 | 614 | 170 |
| APR/MAY/JUNE | 212 | 244 | 70 |

GOALS AND ACTUAL NEW CLUBS CUMULATIVE



GOALS AND ACTUAL MEMBERS CUMULATIVE



| | | | |
|--|--|--|---------------------------------|
| DROPPED CLUBS: 56 | 257 CLUBS OF 528 ADDED 1 OR MORE NEW MEMBERS | GENDER DISTRIBUTION | |
| | | MALE 5,656 (53.03%) FEMALE 5,006 (46.93%) NON BINARY 0 (0.00%) PREFER NOT TO ANSWER 4 (0.04%) | |
| DROPPED MEMBERS | | CLICK HERE FOR CUMULATIVE MEMBERSHIP DATA | TOTAL FAMILY UNIT MEMBERS 4,031 |
| DECEASED 88 CLUB CANCELLED 723 OTHER 984 TOTAL 1,795 | FAMILY MEMBERS PAYING HALF DUES 2,433 | | |